

# STACKING DOOR FRAME LAYOUT DETAIL

1  
3

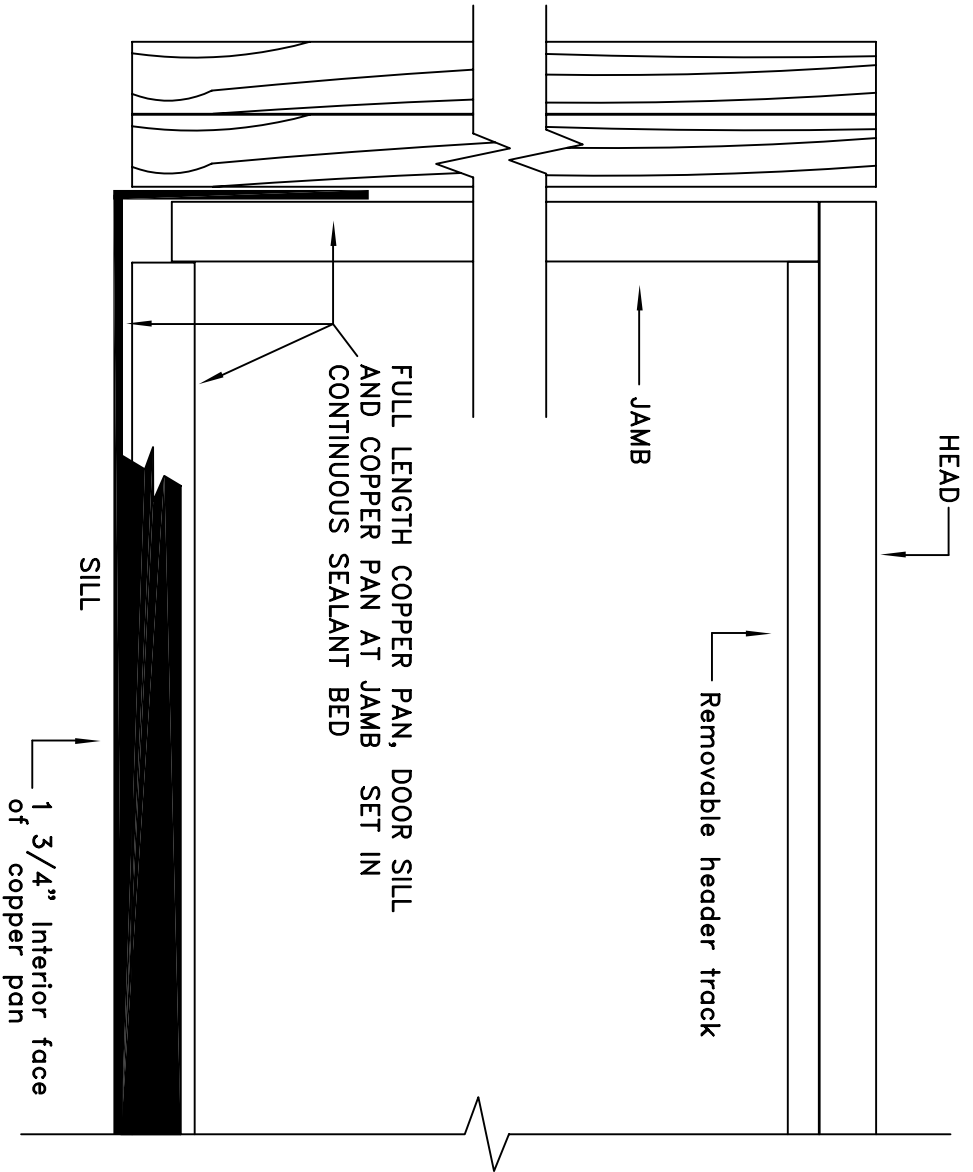
SCALE: 3"=1'

## ASSEMBLY INSTRUCTIONS

- Head width is net door width.
- Jamb butts under head and is left off of floor approximately 1" for water drainage.
- Sill is installed between jamb.
- Top of head to bottom of sill is net door height.
- Removable header track fits between jamb and must be cut to fit.

### Notes:

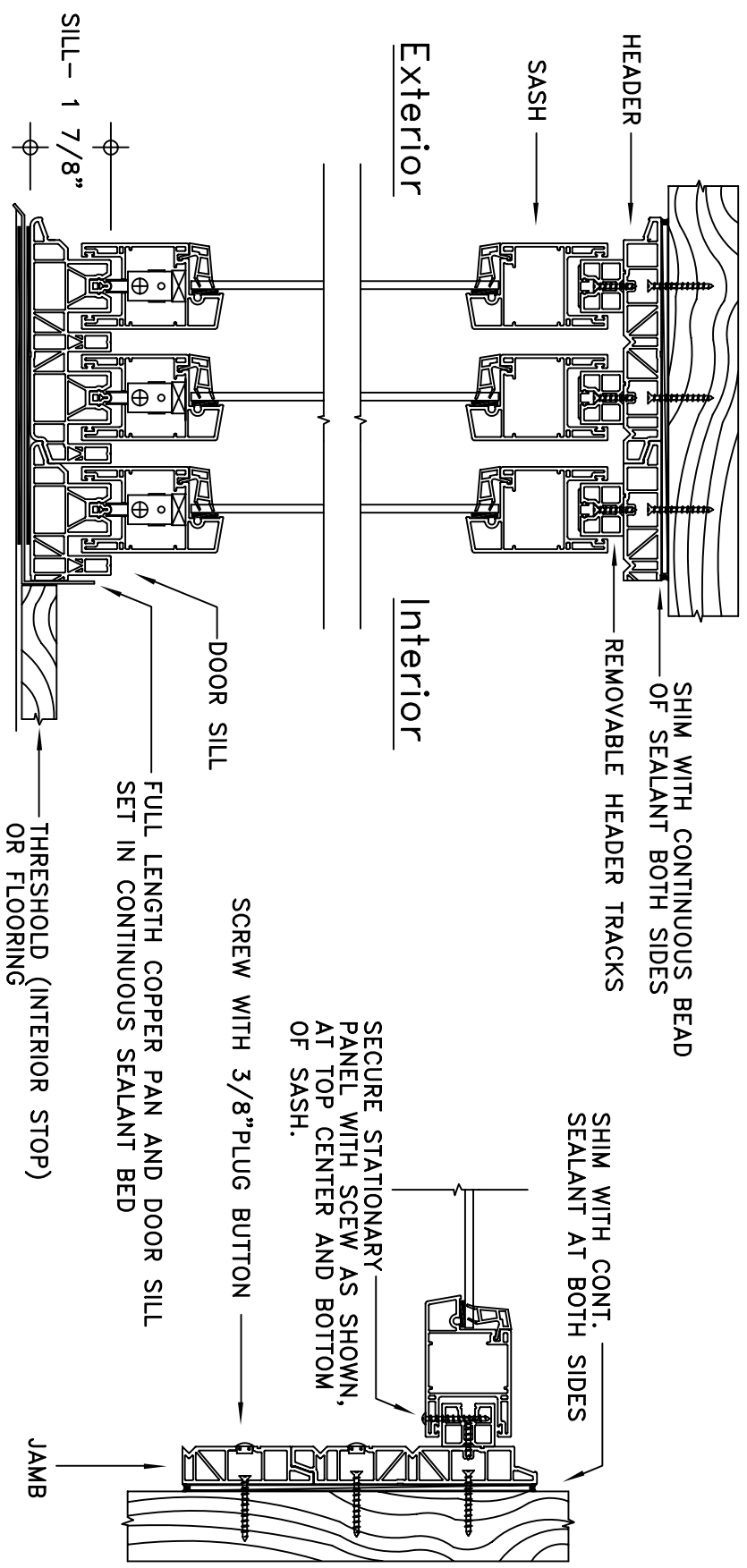
- Standard installation include a full length copper pan at sill and up the jambs 6 to 8 inches
- Copper pan supplied by others



Company: COASTAL WINDOWS INC		Project#:
Drawing title: StackinInstall1.dwg		
Drawn by: ROBERT BARRETT	Architect:	
Date: 12-18-00	Revision 1:	Revision 2:

# STACKING DOOR INSTALLATION DETAIL – FINISHED

SCALE: 3" = 1'



- NOTES:**
- Recommended Sealant – Sonolastic 150
  - Installation screws every 10 to 16 inches
  - No screws through sill, threshold or flooring will act as interior stop. Continuous sealant secures sill.
  - Copper Pan supplied by others.
  - Door sashes are none lift out, they must be tilted into place.

Company: COASTAL WINDOWS INC	Project#:
Drawing title: StackingInstall3.dwg	Architect:
Drawn by: ROBERT BARRETT	Revision 1:
Date: 12-18-00	Revision 2:

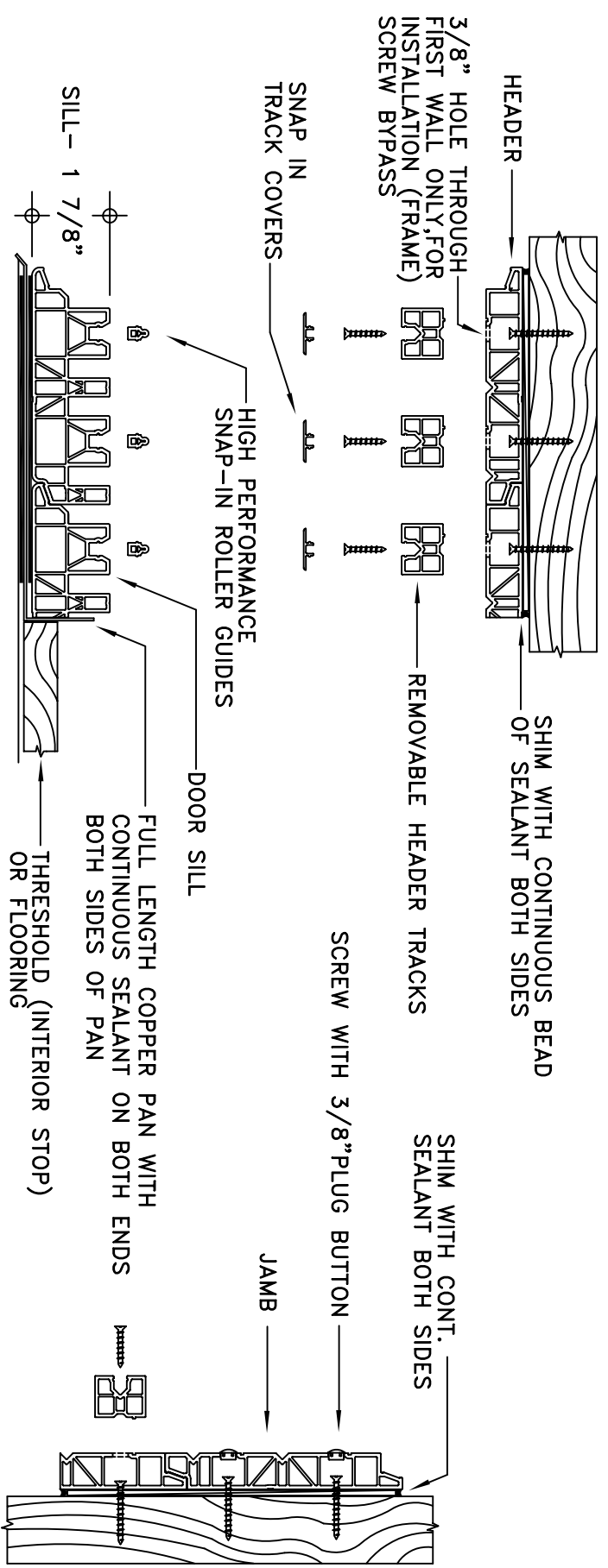
2
3

## STACKING DOOR INSTALLATION DETAIL – EXPLODED VIEW

SCALE: 3" = 1'

Exterior

Interior



**NOTES:**

- Recommended Sealant – Sonolastic 150
- Installation screws every 10 to 16 inches
- No screws through sill, threshold or flooring will act as interior stop. Continuous sealant secures sill.
- Copper Pan supplied by others.
- High performance snap-in roller guides are FLUSH with top of sill when driven in properly. Use rubber mallet.
- Door sashes are non lift out, they must be tilted into place. simultaneously with header tracks.

Company: COASTAL WINDOWS INC	Project#:
Drawing title: StackingInstal12.dwg	
Drawn by: ROBERT BARRETT	Architect:
Date: 12-18-00	Revision 1:
	Revision 2: